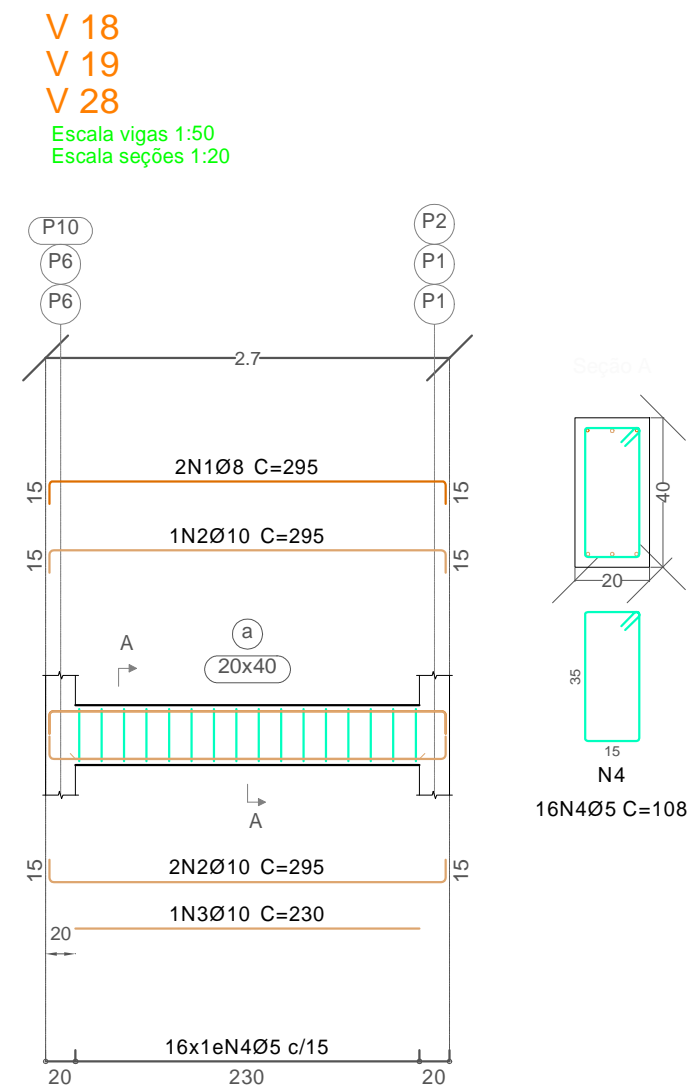
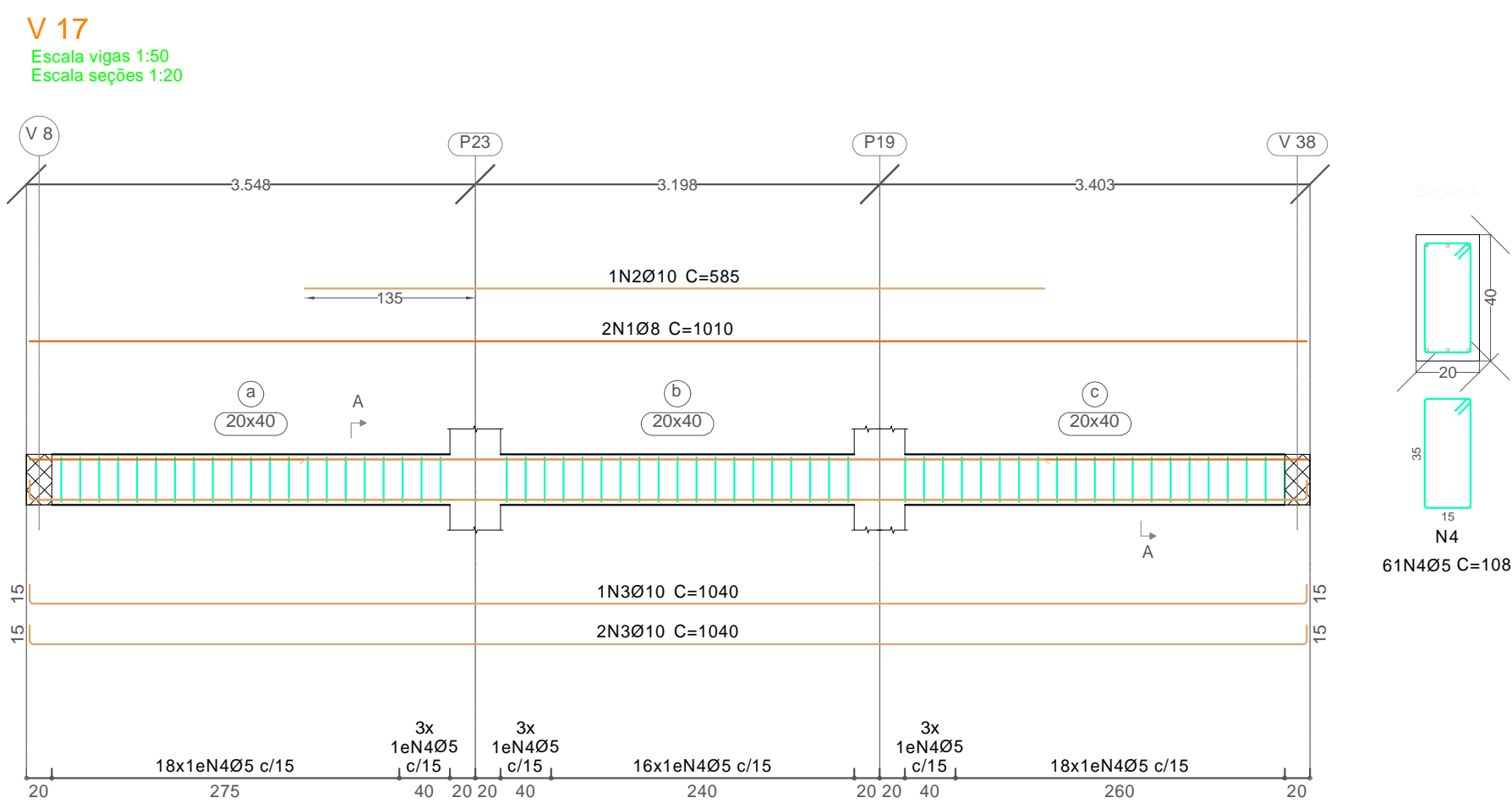
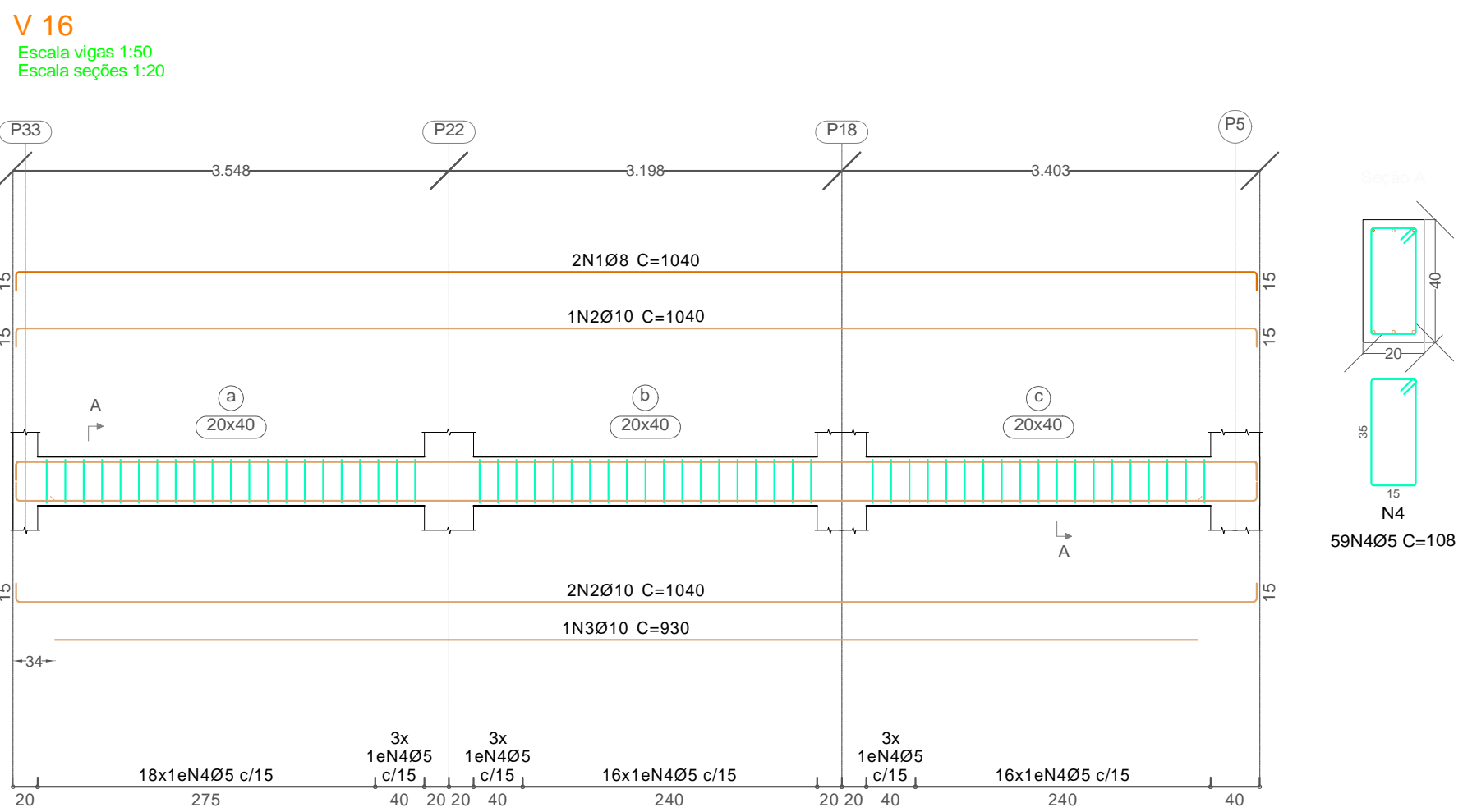
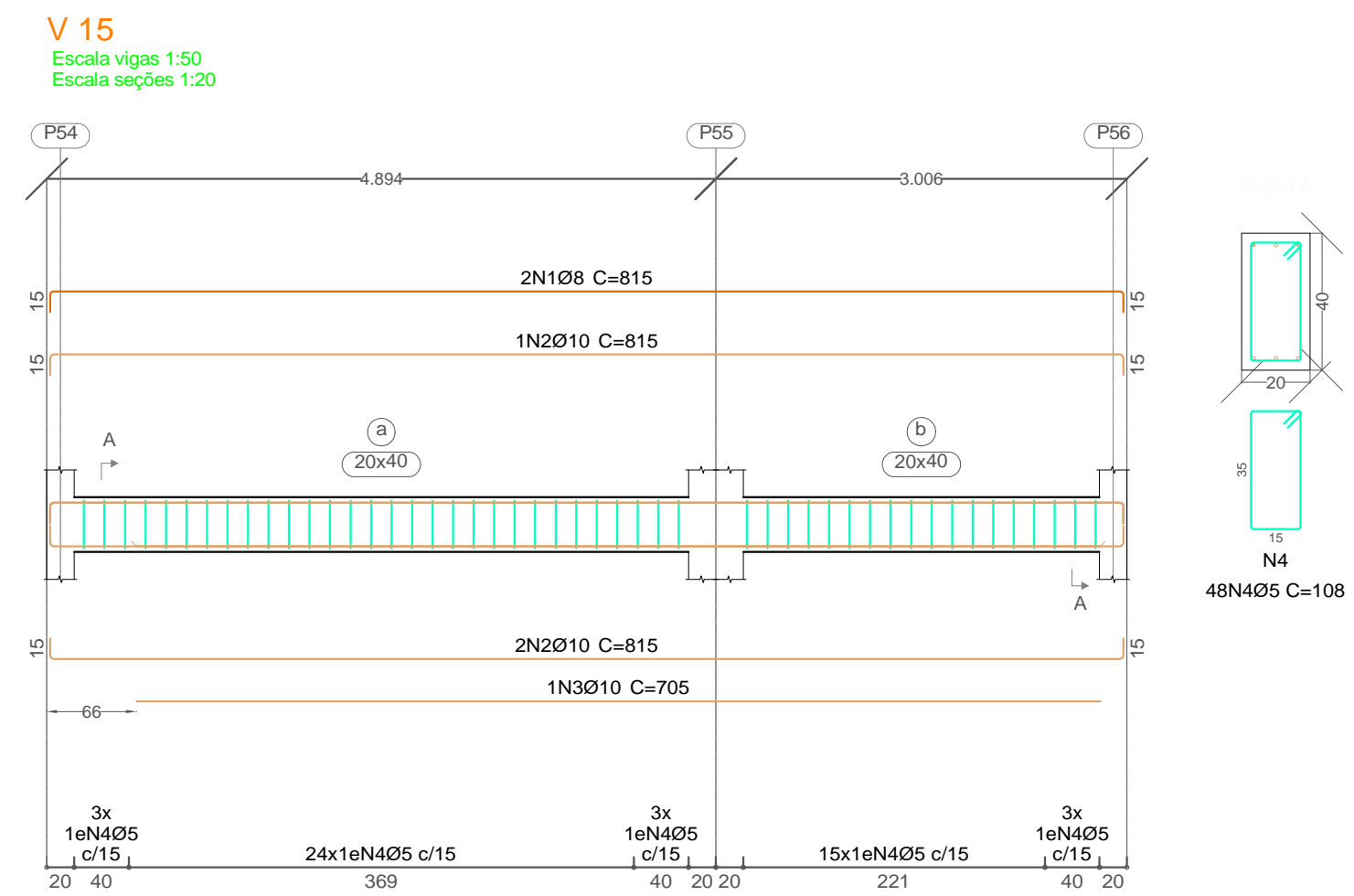
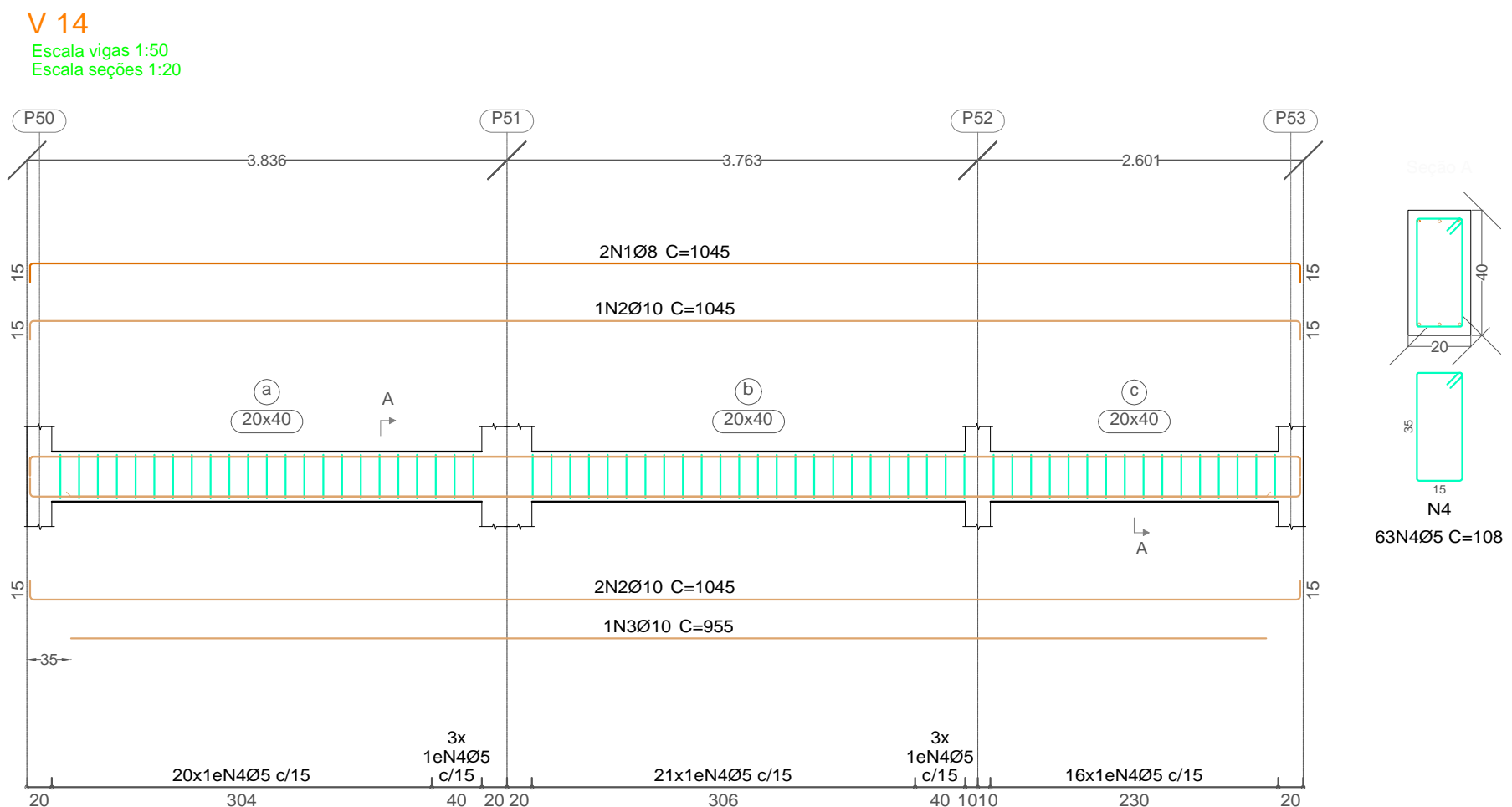
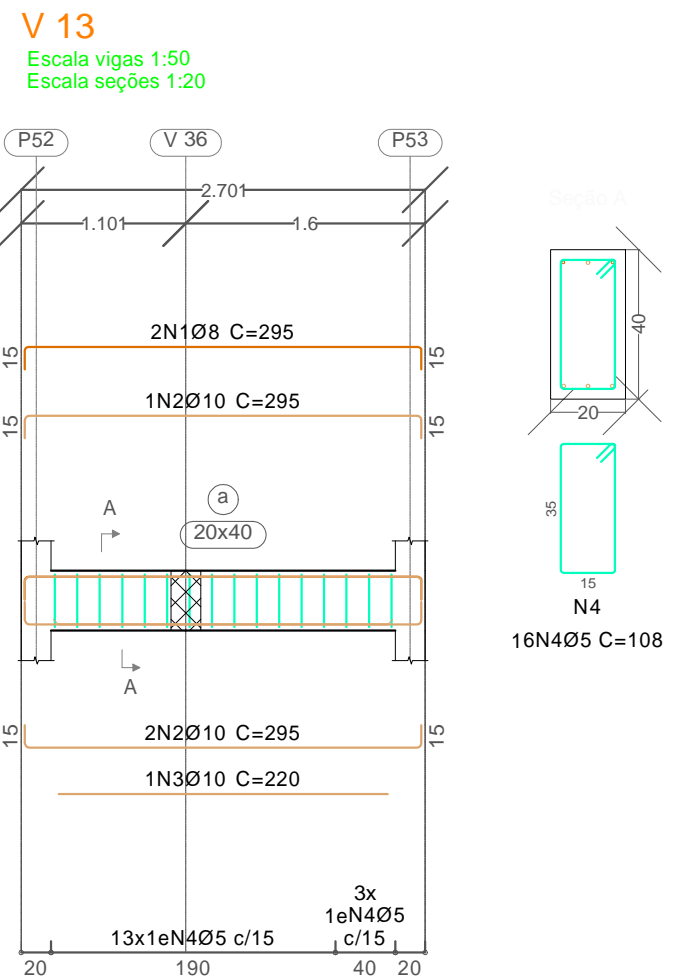
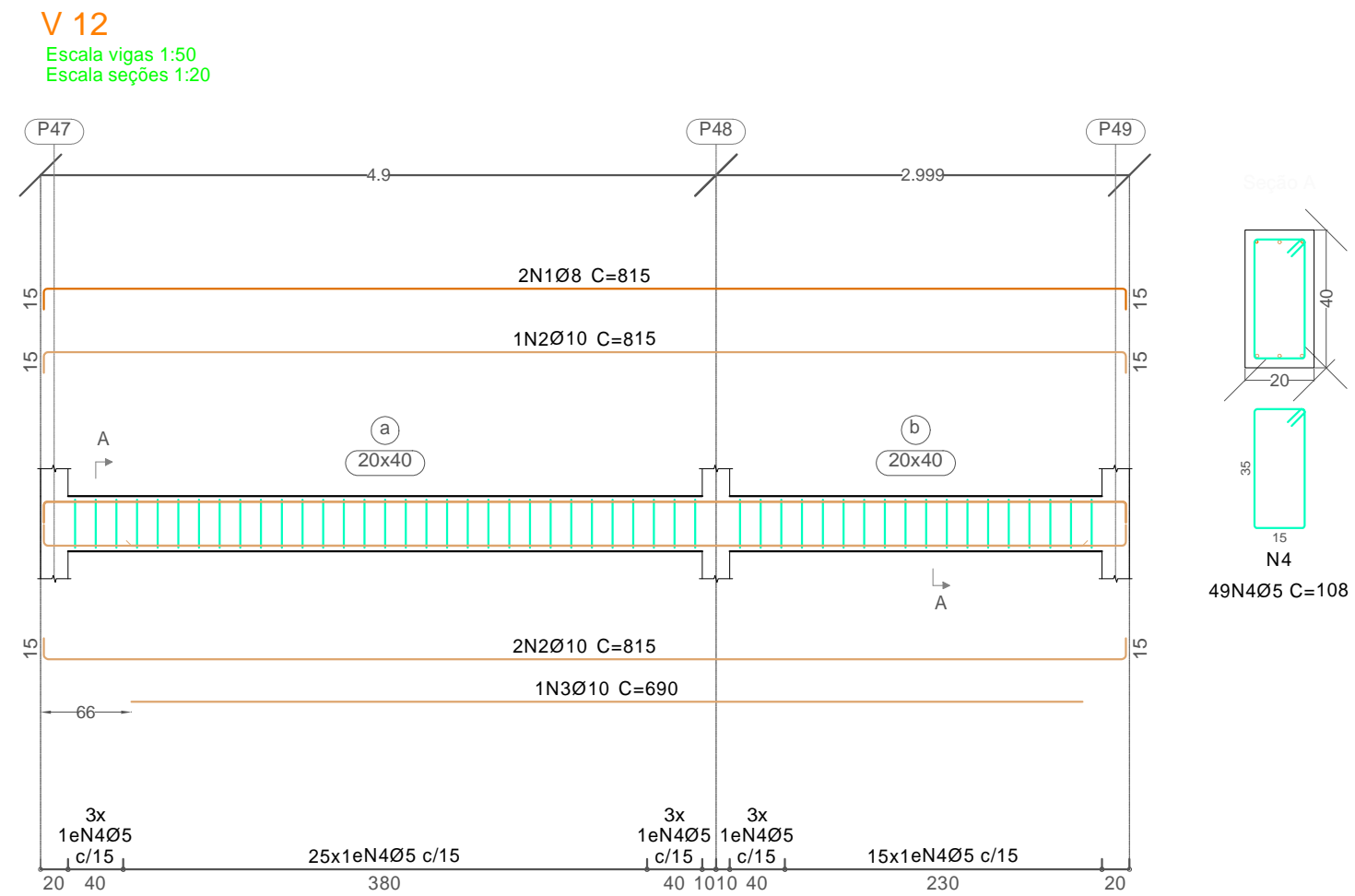
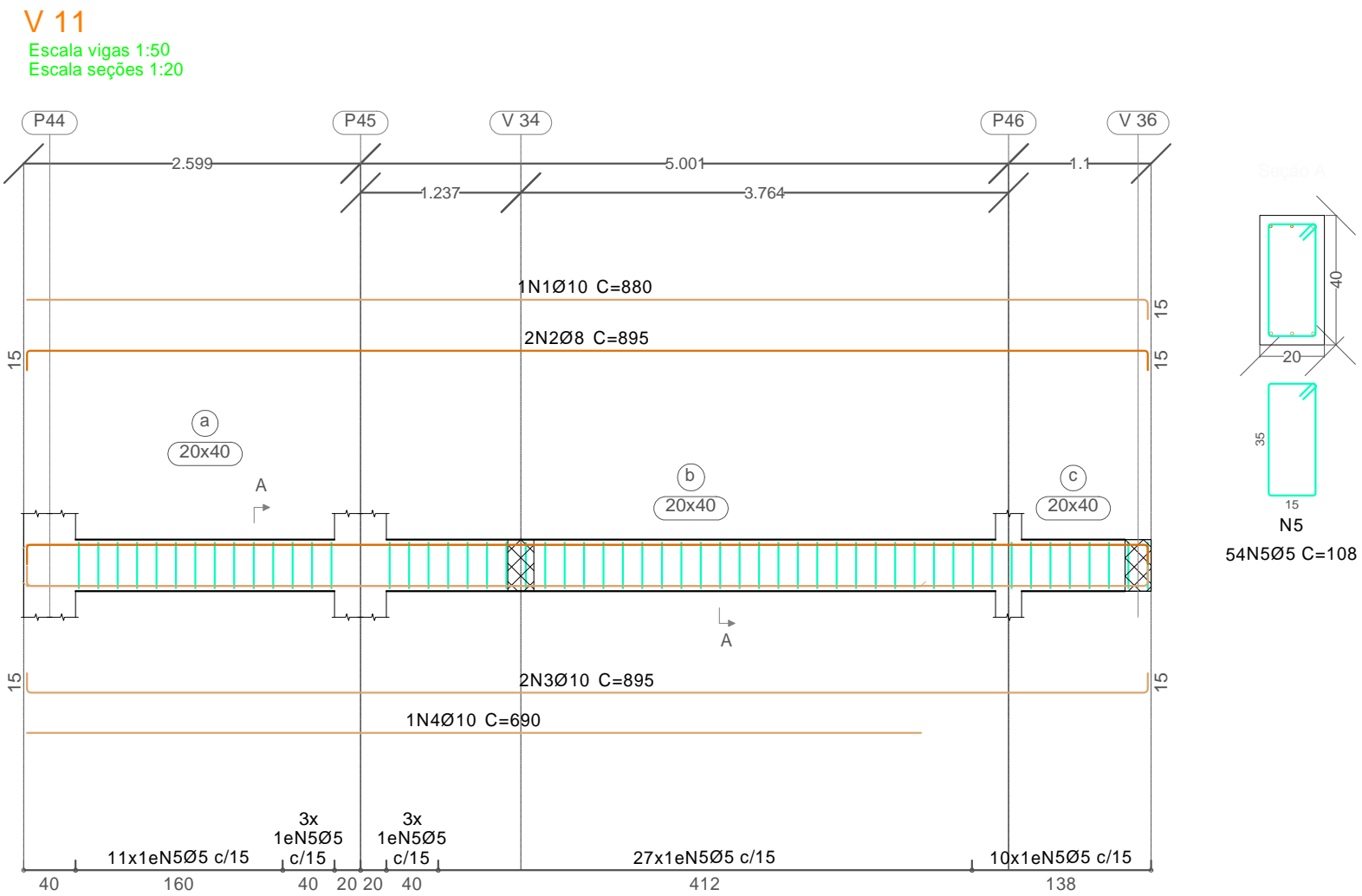
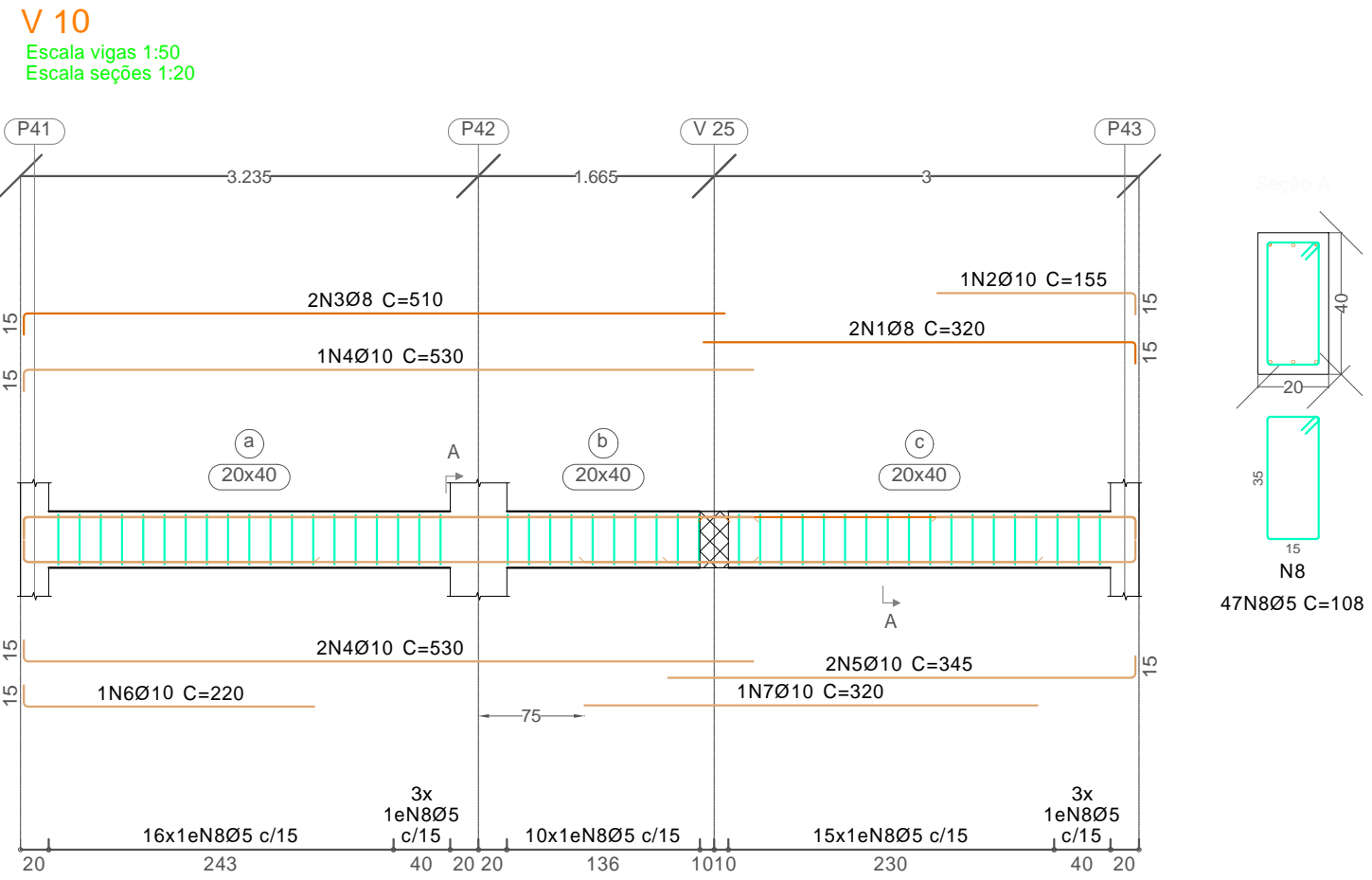
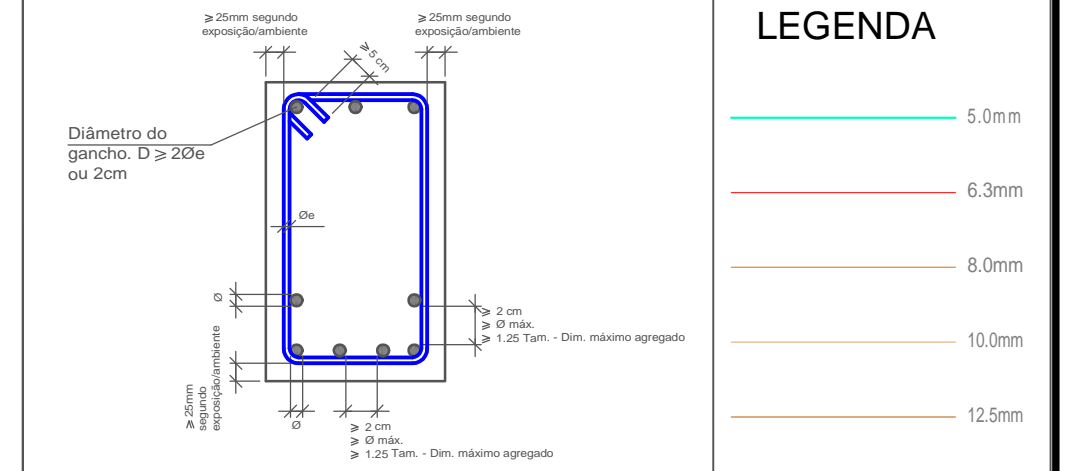


VIGAS BALDRAME TERREO



Elemento	Pos.	Diam.	Q.	Dob. (cm)	Reta (cm)	Dob. (cm)	Comp. (cm)	Total (cm)	CA-50 (kg)	CA-60 (kg)
V 14	1 Ø8	2	15	1015	15	1045	2090	8.3		
	2 Ø10	3	15	1015	15	1045	3135	19.3		
	3 Ø10	1		955		955	955	5.9		
	4 Ø5	63	5	98	5	108	6804			10.7
	Total+10%:								36.9	11.8
V 15	1 Ø8	2	15	785	15	815	1630	6.4		
	2 Ø10	3	15	785	15	815	2445	15.1		
	3 Ø10	1		705		705	705	4.3		
	4 Ø5	48	5	98	5	108	5184			8.1
	Total+10%:								28.4	8.9
V 16	1 Ø8	2	15	1009.9	15	1040	2080	8.2		
	2 Ø10	3	15	1009.9	15	1040	3120	19.2		
	3 Ø10	1		930		930	930	5.7		
	4 Ø5	59	5	98	5	108	6372			10.0
	Total+10%:								36.4	11.0
V 13	1 Ø8	2	15	265.1	15	295	590	2.3		
	2 Ø10	3	15	265.1	15	295	885	5.5		
	3 Ø10	1		220		220	220	1.4		
	4 Ø5	16	5	98	5	108	1728			2.7
	Total+10%:								10.1	3.0
V 12	1 Ø8	2	15	785	15	815	1630	6.4		
	2 Ø10	3	15	785	15	815	2445	15.1		
	3 Ø10	1		690		690	690	4.3		
	4 Ø5	49	5	98	5	108	5292			8.3
	Total+10%:								28.4	9.1
V 11	1 Ø10	1		865	15	880	880	5.4		
	2 Ø8	2	15	865	15	895	1790	7.1		
	3 Ø10	2	15	865	15	895	1790	11.0		
	4 Ø10	1		690		690	690	4.3		
	5 Ø5	54	5	98	5	108	5832			9.2
	Total+10%:								30.6	10.1
V 10	1 Ø8	2		305	15	320	640	2.5		
	2 Ø10	1		140	15	155	155	1.0		
	3 Ø8	2	15	495		510	1020	4.0		
	4 Ø10	3	15	515		530	1590	9.8		
	5 Ø10	2			15	345	690	4.3		
	6 Ø10	1	15	205		220	220	1.4		
	7 Ø10	1		320		320	320	2.0		
	8 Ø5	47	5	98	5	108	5076			8.0
	Total+10%:								27.5	8.8
V 17	1 Ø8	2		1009.9		1010	2020	8.0		
	2 Ø10	1		585		585	585	3.6		
	3 Ø10	3	15	1009.9	15	1040	3120	19.2		
	4 Ø5	61	5	98	5	108	6588			10.3
	Total+10%:								33.9	11.3
V 18 = V 19 = V 28	1 Ø8	2	15	265	15	295	590	2.3		
	2 Ø10	3	15	265	15	295	885	5.5		



NOTAS
1 - A EXECUÇÃO DO ESCORAMENTO, DO RE-ESCORAMENTO E DO CIMBRAMENTO DEVE RESPEITAR A NBR 15696.
2 - RETIRAR ESCORAMENTO APÓS 28 DIAS DA CONCRETAGEM
3 - QUALQUER MODIFICAÇÃO OU DÚVIDA NO PROJETO DEVERÁ SER IMEDIATAMENTE INFORMADA AO PROJETISTA ESTRUTURAL

COBRIMENTOS MÍNIMOS

LAJE E ESCADA: 2,5cm
PILAR: 2,5cm
PILAR (CONTATO COM O SOLO): 2,5cm

CONCRETO

$f_{ck} = 30$ MPa

AÇO: CA-50 E CA-60



PREFEITURA MUNICIPAL
SANTO ANTÔNIO DE LEVERGER

VIGAS

V 10 V 11 V 12 V 13 V 14 V 15
V 16 V 17 V 18 V 19 V 28

RESP. TÉCNICO

PROPRIETÁRIO

Maycon Henrique Moraes Rodrigues
CREA - MT: 51648

Prefeitura Municipal de Santo Antônio de Leverger
CNPJ: 03.507.555/0001-12

05

5 - 31